



Marc Climatic Controls, Inc.

GAS-PHASE AIR FILTRATION UNIT WITH CHEMICAL MEDIA CELLS

CLASS I, DIVISION 2, GROUPS B,C,D - OR - FOR ORDINARY LOCATION

- *Designed to improve indoor air quality and protect sensitive electronic equipment and circuits, contact points in switchgear, circuit breakers, and other sensitive equipment subject to corrosion.*
- *Reduces indoor air contaminants such as H₂S, SO₂, and other acid gases, odors, and many hydrocarbons.*
- *Selection of various chemical medias to target specific contaminants.*
- *Optional fresh air inlet to provide positive pressure inside the closed space to prevent infiltration of contaminated air.*
- *Available NFPA 496 pressurization.*



**MODEL CFSX2000 WITH UP AIR FLOW
CONFIGURATION AND OPTIONAL BELT DRIVE**

Features:

- Marc MC12 chemical media cells with 3" bed depths of potassium permanganate impregnated granules (KMnO₄), activated or impregnated carbon granules.
- 2" pleated prefilter and 4" pleated final filter.
- Heavy 16 gauge cabinet with white urethane coating and neoprene insulated interior.
- Gasketed access doors for air-tight seal.
- Quick access positive pressure door latches.
- Extruded aluminum filter and cell tracks with woven nylon pile seal.
- Direct drive blower with aluminum wheel and totally enclosed motor.
- Filter pressure gauges.
- Indoor air supply and return air grilles.
- Fully recirculated indoor air.
- Indoor access to filters, media cells, and blower.

Options:

- Stainless steel cabinet.
- Fresh air inlet connection with damper for slight positive pressure in the room.
- Full pressurization and purge through doors in compliance with NFPA 496.
- Dual blowers with back-draft dampers for 100% redundancy.
- Control panel with variable frequency drive.
- Fresh air inlet stack and rain cap.
- Disconnect.
- Blower with belt drive.
- Explosion-proof motor.
- Outdoor access to filters, media cells, and blower. Includes angle flange for mounting.
- Custom air flow configurations.
- Various mounting styles and custom features.

GAS-PHASE AIR FILTRATION UNIT

CFSX SERIES

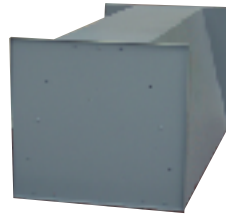


MEDIAS:
 POTASSIUM
 PERMANGANATE
 IMPREGNATED
 GRANULES
 (LOW DUST)

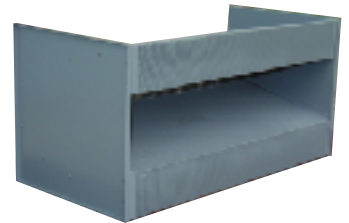


ACTIVATED OR
 IMPREGNATED
 CARBON
 GRANULES
 (LOW DUST)

MC12 MEDIA CELL FILLED WITH POTASSIUM
 PERMANGANATE OR CARBON GRANULES:



UPRIGHT VIEW

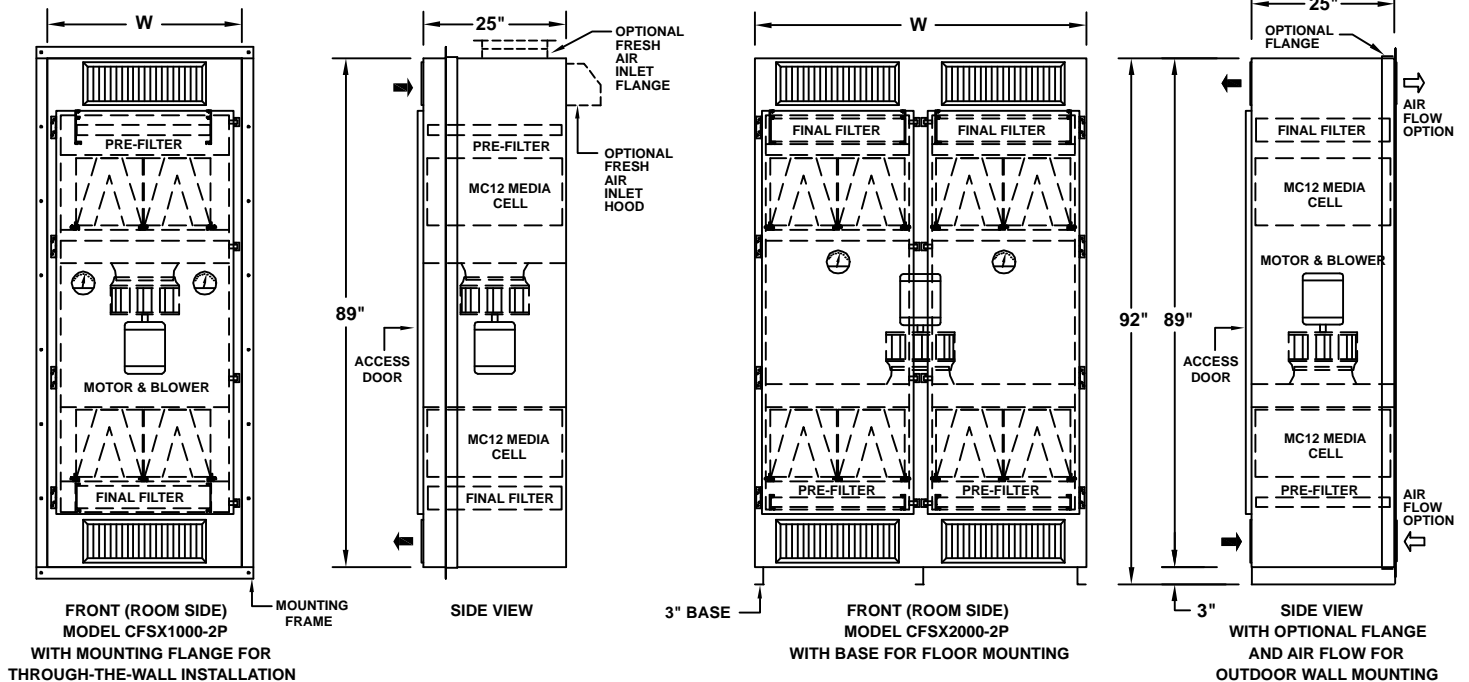


ON SIDE TO SHOW
 DISCHARGE (BOTTOM)

THE "V" SECTION OF THE CELL IS PERFORATED
 ALLOWING AIR FLOW THROUGH THE MEDIA BED

Model	Air Flow (CFM)	Volts Phase Hertz	MC12 Cells Per Pass *	MC12 Cells Per Unit	Number Of Doors	Unit Dimension W
CFSX0500-2P	500	208/230/460-3-60	1	2	1	34"
CFSX1000-2P	1,000	208/230/460-3-60	2	4	1	34"
CFSX1500-2P	1,500	208/230/460-3-60	3	6	1	42"
CFSX2000-2P	2,000	208/230/460-3-60	4	8	2	58"
CFSX3000-2P	3,000	208/230/460-3-60	6	12	3	87"

* Each unit has two (2) passes, or banks of cells.



SPECIFICATIONS ARE SUBJECT TO CHANGE WITHOUT NOTICE 6-24-04



Marc Climatic Controls, Inc.

P. O. Box 218309 • Houston, Texas 77218 USA

Phone (713) 464-8587 • Fax (713) 468-8810

www.marcclimatic.com • E-mail: sales@marcclimatic.com

COPYRIGHT © 2004 Marc Climatic Controls, Inc. All Rights Reserved